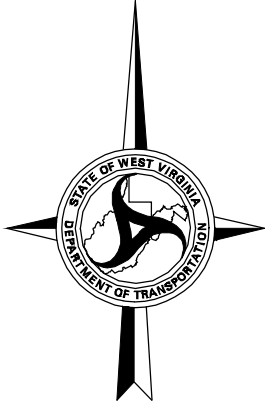
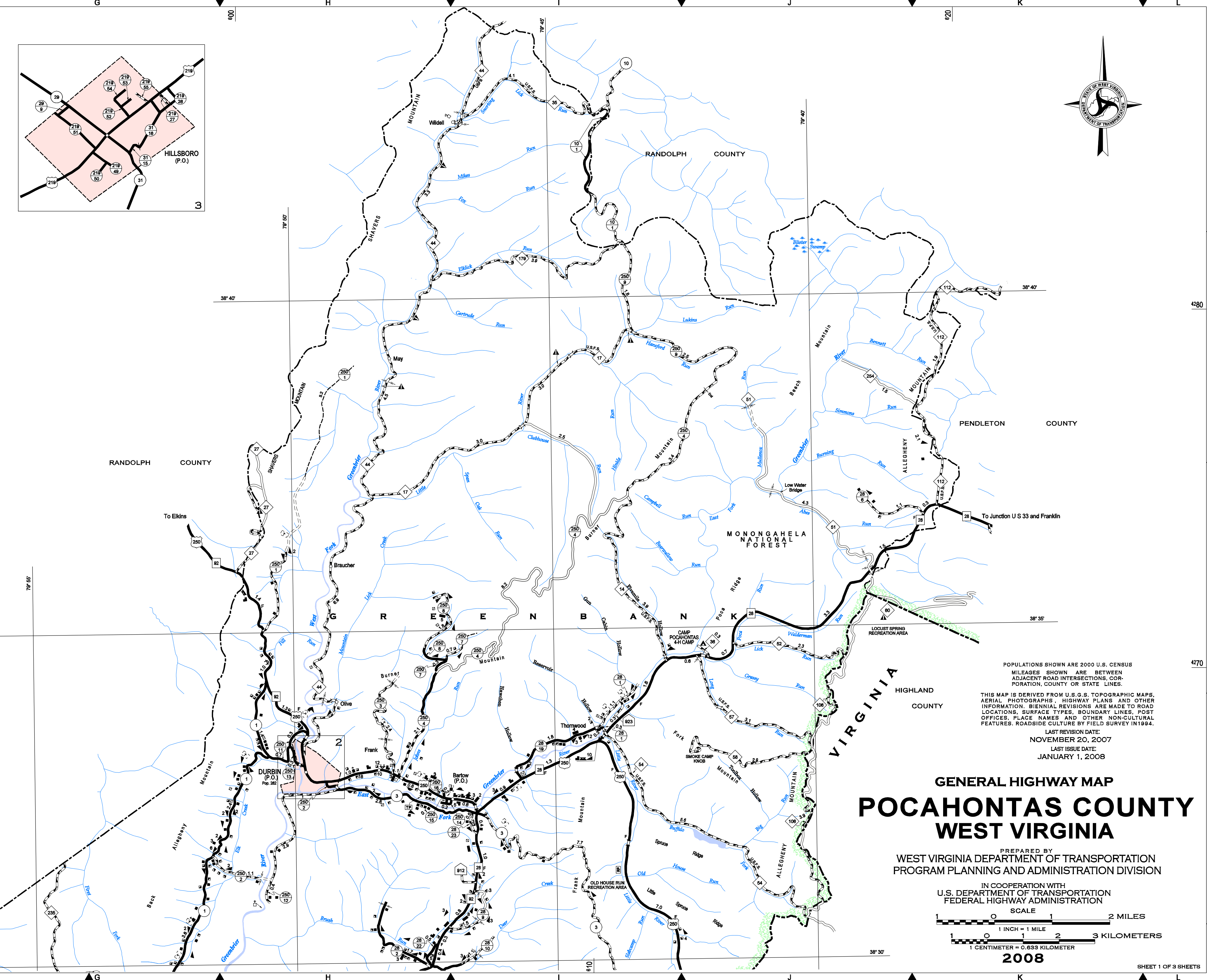
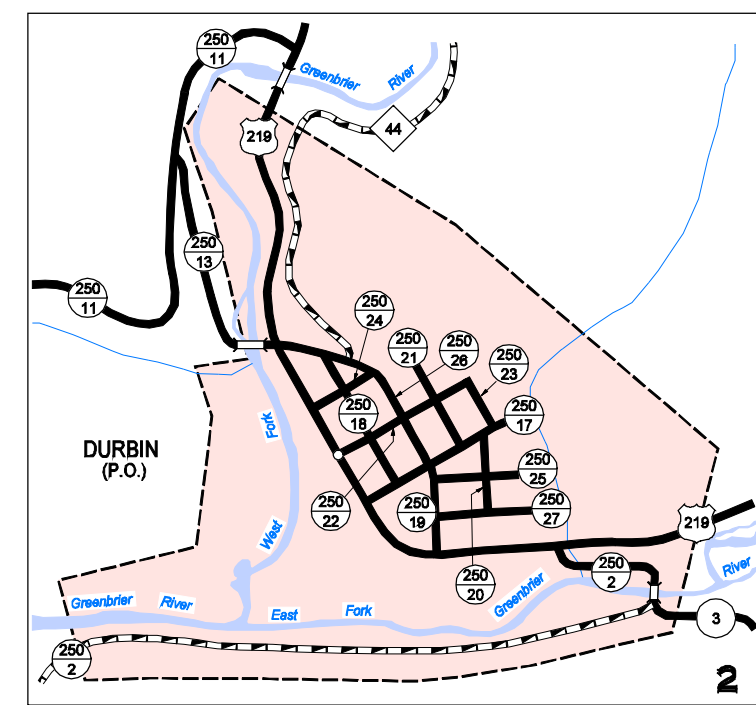
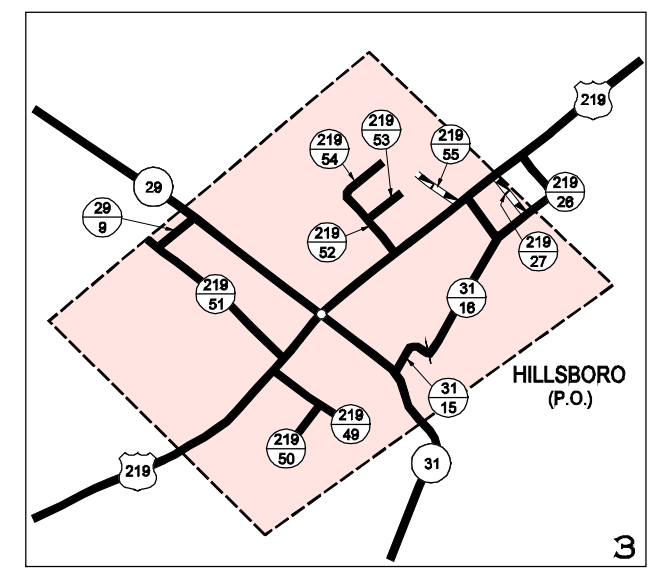
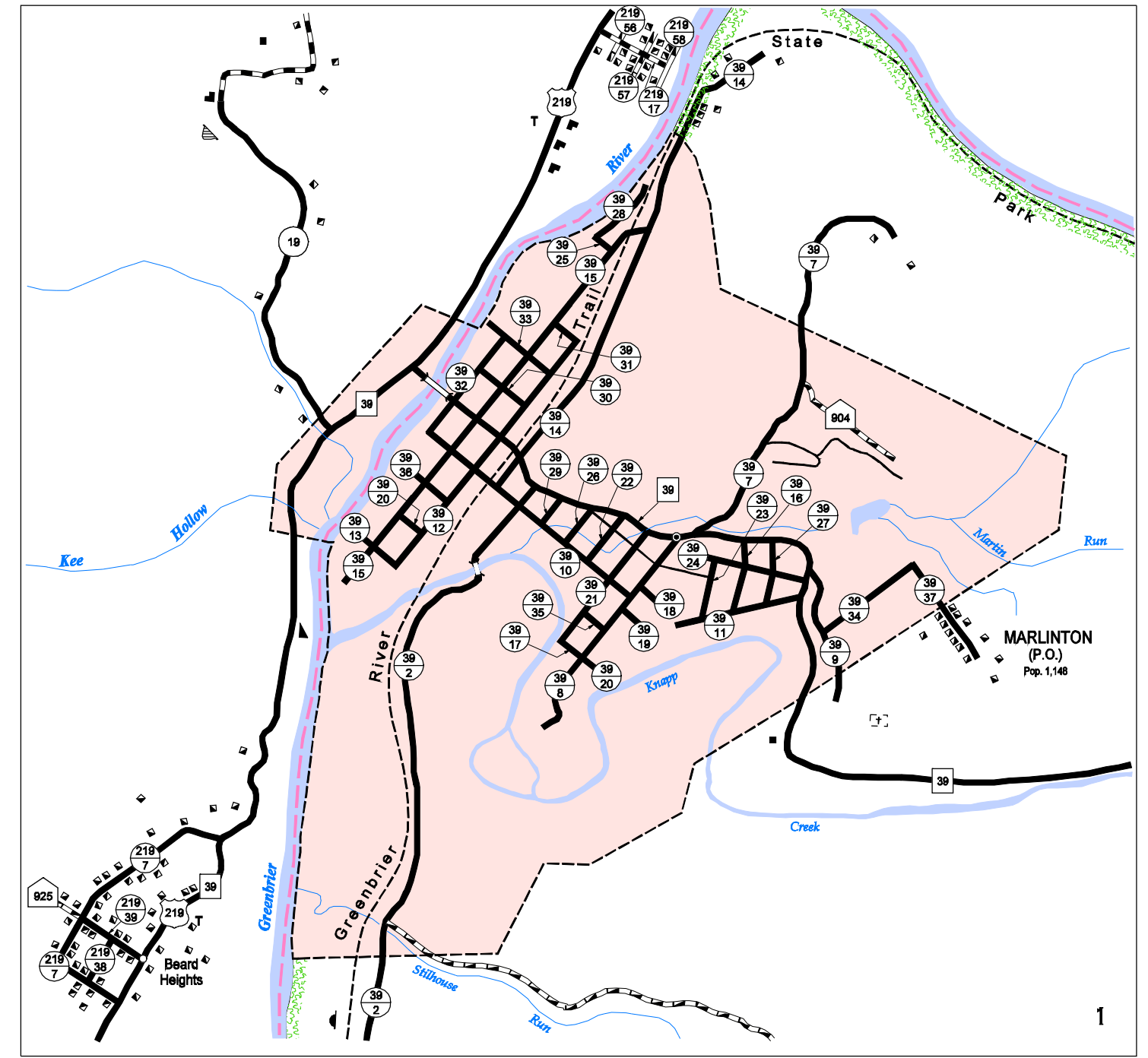


C D E F G H I J K L

1 2 3 4 5

LEGEND

- | | |
|---|---|
| ROADS AND ROADWAY FEATURES | CONSERVATION OR RECREATION |
| TRAIL | PICNIC GROUND |
| IMPASSIBLE ROAD | PLAYGROUND, BALLFIELD |
| PRIMITIVE ROAD | BATHING BEACH OR POOL |
| UNIMPROVED ROAD | SCENIC SITE |
| GRADED AND DRAINED ROAD | CAMPING AREA |
| SOIL SURFACED ROAD | CAMP OR LODGE |
| GRAVEL OR STONE ROAD | FOREST PARKER STATION |
| BITUMINOUS ROAD-LOW TYPE | FISH HATCHERY |
| PAVED ROAD | LOOKOUT TOWER |
| DIVIDED HIGHWAY | COUNTRY CLUB |
| HIGHWAY SIGN SYSTEMS | GOLF COURSE |
| INTERSTATE ROUTE | DRIVE-IN THEATER |
| U.S. NUMBERED HIGHWAY | ATHLETIC FIELD |
| WV NUMBERED HIGHWAY | AMUSEMENT PARK |
| WV PARK AND FOREST ROUTE | FAIRGROUND OR RACE TRACK |
| WV COUNTY NUMBERED ROUTE | RIDING ACADEMY |
| WV HOME ACCESS ROUTE | RIFLE CLUB |
| FUNCTIONAL SYSTEMS | ROADSIDE PARK |
| EXPRESSWAY | DWELLINGS, FARM UNITS, ETC. |
| TRUNKLINE | FARM UNIT |
| FEEDER | DWELLING (OTHER THAN FARM) |
| STATE LOCAL SERVICE (ALL OTHERS) | ROW OF HOUSES (WITH NUMBER OF DWELLING) |
| ROADS NOT ON STATE SYSTEM | TRAILER PARK |
| PUBLIC ROADS | HOUSE AND STORE (JOINT USE) |
| PRIVATE ROADS AND STREETS | HOTEL |
| IN INSETS AND MUNICIPALITIES | MOTEL |
| U.S. FOREST SERVICE ROAD | HOSPITAL |
| W. VA. DIV. NAT. RESOURCES ROAD | REST HOME |
| NAVIGATION | CHURCH |
| TOLL FERRY | CEMETERY |
| BARGE LINES | CHURCH WITH CEMETERY |
| DOCK OR LANDING | EDUCATIONAL |
| NAVIGABLE STREAM | PUBLIC SCHOOL |
| DAM WITH LOCK | OTHER EDUCATIONAL INSTITUTIONS |
| AIRPORTS | COMMUNITY HALL |
| AIRPORT, COMPLETE FACILITIES | MUSEUM |
| AIRPORT, LIMITED FACILITIES | CORRECTIONAL |
| LANDING AREA OR STRIP (AND PRIVATE FIELD) | CORRECTIONAL INSTITUTION |
| SEAPLANE BASE | COUNTY FARM |
| AIRWAY LIGHT BEACON | BUSINESS AND INDUSTRY |
| RAILROADS | STORE OR SMALL BUSINESS |
| RAILROAD (ANY NUMBER OF TRACKS) | SHOPPING CENTER |
| NARROW GAUGE RAILROAD | FACTORY OR INDUSTRIAL PLANT |
| RAILROAD STATION | SEASONAL INDUSTRY |
| GRADE CROSSING | MINE |
| RAILROAD ABOVE | SAWMILL |
| RAILROAD BELOW | PUMPING STATION |
| RAILROAD BRIDGE (OVER STREAM) | OIL OR GAS WELLS |
| RAILROAD TUNNEL | OIL TANKS |
| DRAINAGE | QUARANTINE STATION |
| NARROW STREAM | STOCK YARD, LOADING PEN |
| WIDE STREAM | GREENHOUSE |
| MARSH OR SWAMP | NURSERY |
| DAM, WITHOUT ROAD | PUBLIC SERVICE FACILITIES |
| STRUCTURES | POST OFFICE |
| HIGHWAY BRIDGE (MORE THAN 20 SPANS) | BUSINESS AND POST OFFICE |
| BRIDGE, GENERAL WIDE STREAM | POWER PLANT |
| SUSPENSION BRIDGE | POWER SUBSTATION |
| TRUSS OR GIRDER BRIDGE | RADIO OR TV TOWER (WITH CALL LETTERS) |
| CANTILEVER BRIDGE | DIVISION OF HIGHWAYS GARAGE |
| DAM WITH ROAD | STATE POLICE STATION |
| HIGHWAY TUNNEL | FIRE HOUSE AND/OR RESCUE SQUAD |
| FORD | DUMP-GARBAGE, REFUSE OR TRASH |
| TOLL BRIDGE | AUTOMOTIVE GRAVEYARD |
| FOOT BRIDGE | METAL SCRAP YARD |
| BOUNDARIES | SANITARY LAND FILL |
| STATE LINE | MISCELLANEOUS DUMP |
| COUNTY LINE | INCINERATOR |
| MAGISTERIAL DISTRICT LINE | SEWAGE TREATMENT PLANT |
| INCORPORATED TOWN | MISCELLANEOUS |
| AREA ENLARGED | MILITARY POST |
| PARK OR FOREST BOUNDARY | ARMORY |
| CITY AND VILLAGE CENTERS | GATE |
| STATE CAPITOL | SINK OR DEPRESSION |
| COUNTY SEAT | LATITUDE AND LONGITUDE |
| OTHER CITIES AND VILLAGES | HIGHWAY INTERCHANGE |



POPULATIONS SHOWN ARE 2000 U.S. CENSUS
MILEAGES SHOWN ARE BETWEEN
ADJACENT ROAD INTERSECTIONS, COR-
PORATION, COUNTY OR STATE LINES.

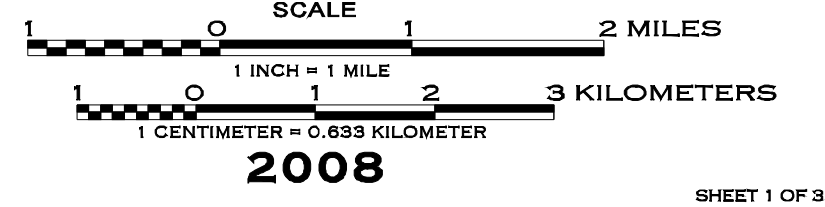
THIS MAP IS DERIVED FROM U.S.G.S. TOPOGRAPHIC MAPS,
AERIAL PHOTOGRAPHS, HIGHWAY PLANS AND OTHER
INFORMATION. BIENNIAL REVISIONS ARE MADE TO ROAD
LOCATIONS, SURFACE TYPES, BOUNDARY LINES, POST
OFFICES, PLACE NAMES AND OTHER NON-CULTURAL
FEATURES. ROADSIDE CULTURE BY FIELD SURVEY IN 1994.

LAST REVISION DATE:
NOVEMBER 20, 2007
LAST ISSUE DATE:
JANUARY 1, 2008

**GENERAL HIGHWAY MAP
POCAHONTAS COUNTY
WEST VIRGINIA**

PREPARED BY
WEST VIRGINIA DEPARTMENT OF TRANSPORTATION
PROGRAM PLANNING AND ADMINISTRATION DIVISION

IN COOPERATION WITH
U.S. DEPARTMENT OF TRANSPORTATION
FEDERAL HIGHWAY ADMINISTRATION



Copies of this map are available to the public and to government agencies at a
 special price. For more information, contact the West Virginia Department of
 Transportation, Map Sales, 1000 Kanawha Boulevard East, Charleston,
 West Virginia 25305-0450. Telephone: (304) 538-2666.

THE NATIONAL FOREST AREA DESIGNATED ON THIS MAP
INCLUDES BOTH PUBLIC AND PRIVATE LANDS. MAPS
SHOWING DETAILED OWNERSHIP MAY BE OBTAINED FROM:
THE FOREST SUPERVISOR, MONONGAHELA NATIONAL FOREST,
ELKINS, WEST VIRGINIA.

This map is an illustration and is not intended for use in direct mensuration of real features
on the surface of the earth or any other engineering design. The size of objects and
distances between them are exaggerated for ease of use only. This map does not contain
all or even most of the features found on the face of the earth in any given location.
It only depicts those features found in the legend within its geographic area.
The intended use of this map is for planning and simple location of features to
within several hundred feet of their correct position on the face of the earth.

10,000 METER UNIVERSAL TRANSVERSE
MERCATOR GRID TICKS, ZONE 17